



# MP Mobi

A homelift designed for houses and  
providing accessibility

[mplifts.com](http://mplifts.com)

# Mp Mobi



homelift



connectivity



accessibility



safety



robust



versatile



## Homelift designed for houses and providing accessibility

### Comfort and safety

A truly high-performance and user-friendly lift, which adds value and accessibility to your house or building. Includes an automatic rescue system as standard for maximum safety.

**Excels in**  
Innovation, comfort

**Capacity**  
2 - 13 people  
(180-1000 kg)

**No. Stops**  
6 (maximum)

**Type of lift**  
Hydraulic

**Speed**  
0.15 m/s

**Voltage**  
Three-phase: 380 / 400 / 415V

Single-phase (optional): 230 V  
Three-phase (optional): 220 / 230 V



# MP Mobi

Recommended for  
public use buildings

**Robust and  
high-quality**

*MP Mobi* is designed using the same technology as a lift intended for intense use in public buildings. This means maximum reliability and an extended useful life.

*MP Mobi* offers more load capacity than other common lifts, since it can carry up to 1,000 kg.

Speed (m/s)	Car width (mm)	Car depth (mm)	Capacity (persons)	Rated Load (Kg) (EN81-2)
0,15	1000	900	4	320
0,15	1000	1250	6	480
0,15	1100	1400	8	630
0,15	1100	2100	13	1000



# MP Mobi HOME

Recommended for  
domestic and private use

## Accessibility in Private Homes

MP Mobi HOME gets rid of physical barriers, making it easier for those with reduced mobility to get around at home.

It is ideal for home or private use.

Speed (m/s)	Car width (mm)	Car depth (mm)	Capacity (persons)	Rated Load (Kg) (EN81-2)
0,15	1000	900	3	225
0,15	1000	1250	4	315
0,15	1100	1400	5	385

(\*) Minimum pit 200 mm. Optional 150 mm at extra cost





# Your safety and well-being are our number one priority



## Automatic rescue system as standard

Both models are equipped with a battery system which, in the case of power outages, ensures the lift is able to make its way to the nearest landing and open its doors.

### SAFETY

Automatic sliding folding door in the car

Manual rescue using the emergency pushbutton in the hydraulic power centre.

Alarm pushbutton and pushbutton to open doors

Rupture valve in the event of breakage in the hydraulic valve.

Emergency car light for use in the event of a cut in the mains power.

Mechanical block in the pit and overhead against uncontrolled car movements (for maintenance work in the shaft)

Optical-acoustic overload control

Two reset keyswitches (pit and overhead) on the controller

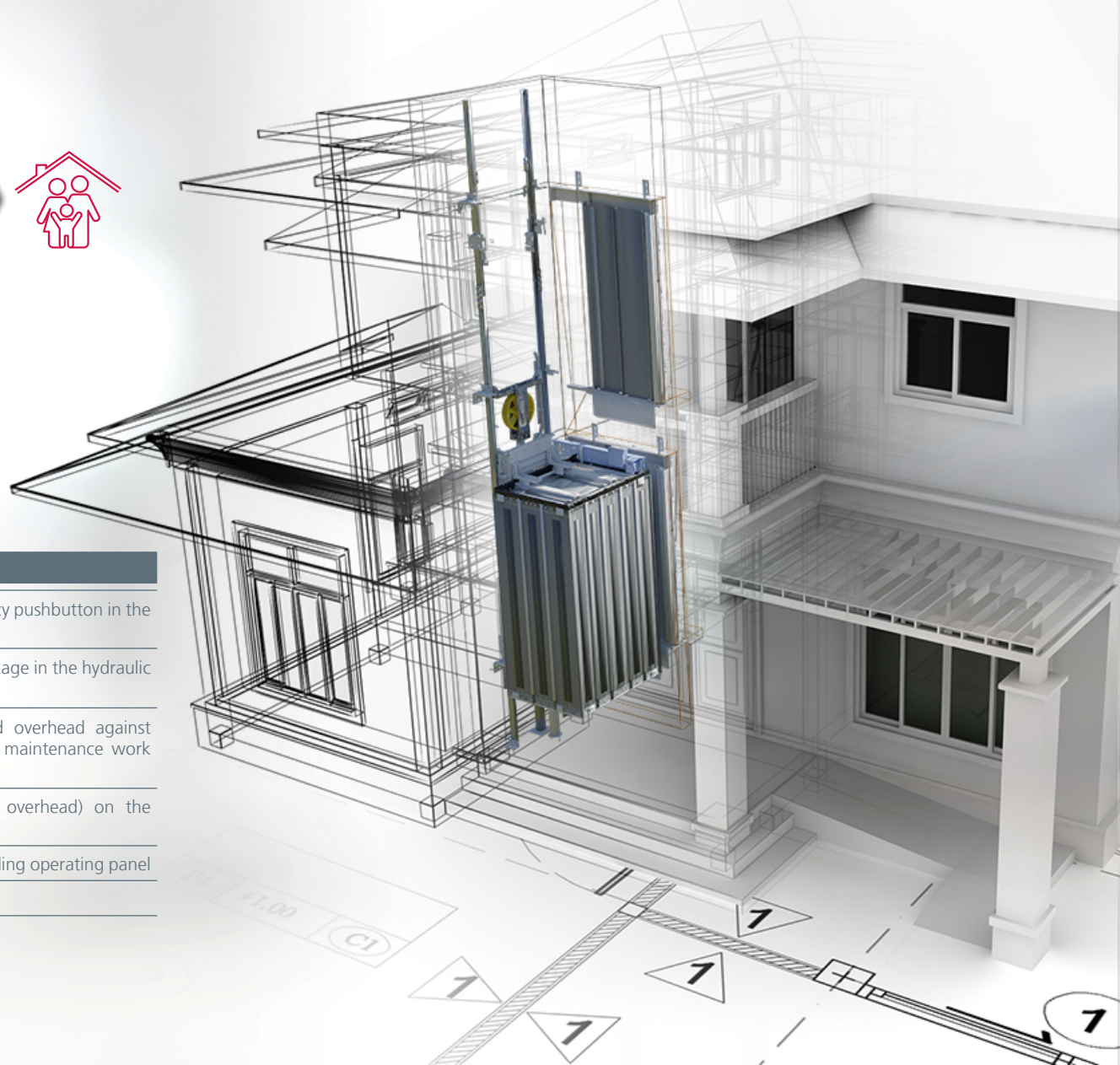
Emergency phone

Out of order keyswitch on the landing operating panel

Non-skid rubber floor

Connected lift (optional)

Automatic rescue in the event of there being no mains power



## User-friendly



**MP Mobi** and **MP Mobi HOME** are provided with a car door, meaning unrestricted use and functioning similar to that of a conventional lift. This ensures maximum safety and avoids, inter alia, the need for continuous pressing required by other homelifts.

## Architectural versatility



Adaptable to both indoor and outdoor building areas, they allow for a wide range of aesthetic and configuration options, facilitating architectural integration.

## Eco-efficient



The hydraulic technology of this lift ensures its impact on the environment is minimal. The car includes a light timer system, allowing you to cut energy consumption.



## Details on a large scale

# MP CAR evolution

The car is a very important part of a lift. That is why at MP Lifts, we offer a range of cars which meet even the most demanding requirements.

You can now make the most of the vast range of options on offer and design your car yourself, making sure it's a perfect fit for your building, requirements and personal preferences.

All you have to do is select a car range and then let your imagination do the rest. You can choose from a wide range of finishes, mixing and matching them as you wish.

Now available our PANORAMICS car range.



For more information:  
[mplifts.com/carevolution](http://mplifts.com/carevolution)

▶ VILITER  
Plastic-coated steel



▶ STYLE  
Melamina | Laminated Plywood



▶ SUPRA  
Stainless steel



▶ SUPRAMAX  
Chipboard with milled phenolic laminate



▶ AMBIENTUM JL  
Customised walls with coloured glass panels or printed photos



▶ AMBIENTUM UNIKE  
Customised walls with coloured glass panels or printed photos



FUSION  
SUPRA X02



FULL HEIGHT  
COLUMN X02



TFT028 (2,8'')



TFT043 (4,3'')



TFT070M (7'')



Width of Panel mirror



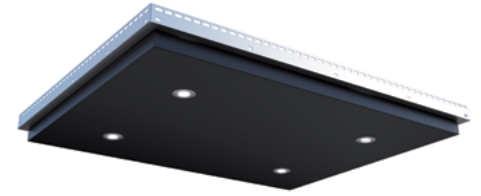
Handrails P13x12

# VILITER

Plastic-coated steel

Range  
**koloro**  
Solid colours

Finish  
K01 White



L40 ( lighting H80 )

### WALLS



K01 White



K04 Night  
Black



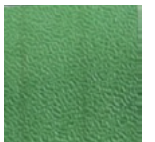
K10 Blue



K11 Techno  
Grey



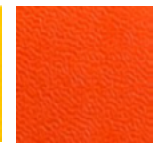
K17 Nature  
Beige



K18 Green



K19 Yellow

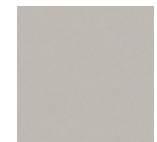


K20 Orange

### FLOORING



R31  
Steel



R32  
Greige



R33  
White



MP Mobi



MP Mobi



MP Mobi



MP Mobi HOME



MP Mobi HOME





[mplifts.com](http://mplifts.com)